

# Champro®



## PLASTIC STAPLER/WELDER KIT MODEL NO: PSW2

PART NO: 3400772

## USER INSTRUCTIONS



ORIGINAL INSTRUCTIONS

GC10/24

# INTRODUCTION

Thank you for purchasing this CLARKE product.

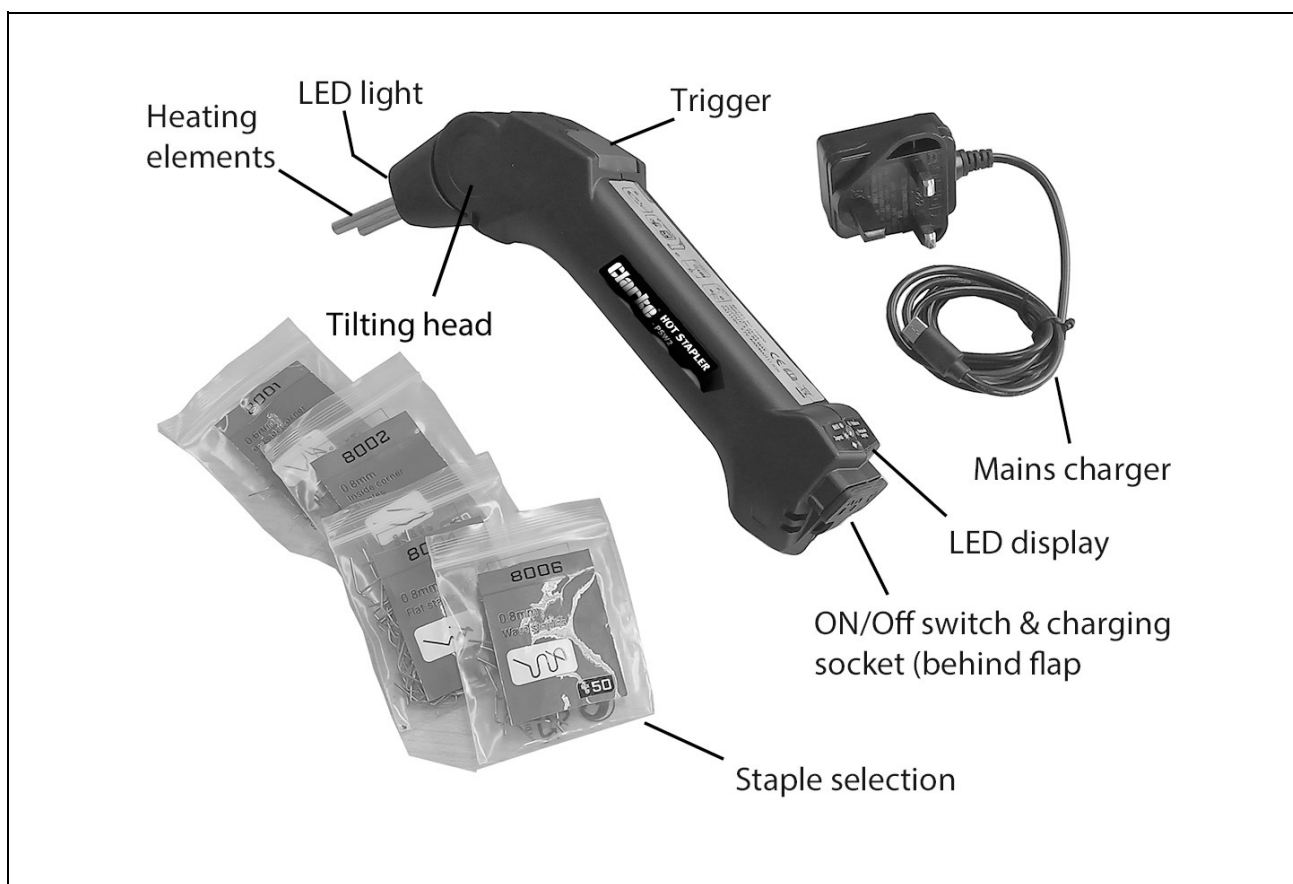
Before attempting to use this product, please read this manual thoroughly and follow the instructions carefully. In doing so you will ensure the safety of yourself and that of others around you, and you can look forward to your purchase giving you long and satisfactory service.

This product has been designed to give long and trouble free service. If, however, having followed the instructions in this booklet carefully, you encounter problems take the unit to your local CLARKE dealer.

The PSW2 Stapler is ideal for plastic crack repairs and reinforcement with different staples used in various situations.

Staples are supplied in different sizes (see page 12) and after implanting, the exposed staple parts can be easily broken off after the plastic parts are melted. The staples are stainless steel so will not corrode in the future, thereby compromising the strength of the repair.

The PSW2 Stapler incorporates overheating/overloading protection and a high-brightness LED light.



---

## SPECIFICATIONS

---

Item	Specification
Dimensions (L x D x H)	255 x 59 x 36 mm - product 260 x 205 x 75mm - storage case
Weight	267 g (device only)
Operating voltage	DC5V - 2A
Rated power (charger)	10 W
Ingress protection	IP20
Power cable length	1.0 m
Charging time	3 hours @2A
Run time	400 staples (fully charged)
Maximum material thickness	2.87 mm
Battery	3.65V 4000 mAh Li-ion
Heating element temperature	600°C max

---

## GUARANTEE

---

This product is guaranteed against faulty manufacture for a period of 12 months from the date of purchase. Please keep your receipt which will be required as proof of purchase.

This guarantee is invalid if the product is found to have been abused or tampered with in any way, or not used for the purpose for which it was intended.

Faulty goods should be returned to their place of purchase, no product can be returned to us without prior permission.

This guarantee does not effect your statutory rights.

---

# GENERAL SAFETY WARNINGS

---



**WARNING: READ ALL SAFETY WARNINGS AND ALL INSTRUCTIONS. FAILURE TO FOLLOW THE WARNINGS AND INSTRUCTIONS MAY RESULT IN ELECTRIC SHOCK, FIRE AND/OR INJURY.**

---

## WORK AREA SAFETY

1. Keep the work area clean and well lit. Cluttered or dark areas invite accidents.
2. Keep children and bystanders away while operating a power tool. Distractions can cause you to lose control.
3. To prevent fire, **DO NOT** use this device in a flammable and explosive environment.
4. Due to the gasses given off by the melting of the plastic the device should be used in a well ventilated workplace.
5. If you need to use the device in the car paint booth always extract the contaminated air from the paint booth in advance.

## ELECTRICAL SAFETY

1. Power tool plugs must match the outlet. **NEVER** modify the plug in any way. Unmodified plugs and matching outlets will reduce risk of electric shock.
2. **DO NOT** expose power tools to rain or wet conditions. Water entering a power tool will increase the risk of electric shock.
3. **DO NOT** abuse the charging lead. Keep the cable away from heat, oil or sharp edges. Damaged or entangled cables increase the risk of electric shock.

## PERSONAL SAFETY

1. Stay alert, watch what you are doing and use common sense when operating a power tool. **DO NOT** use a power tool while you are tired or under the influence of drugs, alcohol or medication. A moment of inattention while operating power tools may result in personal injury.
2. **DO NOT** overreach. Keep proper footing and balance at all times. This enables better control of the power tool in unexpected situations.
3. Dress properly. **DO NOT** wear loose clothing or jewellery.

## **GENERAL POWER TOOL USE AND CARE**

1. **DO NOT** force the power tool. Use the correct power tool for your application. The correct power tool will do the job better and safer at the rate for which it was designed.
2. **DO NOT** use the power tool if the switch does not turn it on and off. Any power tool that cannot be controlled with the switch is dangerous and must be repaired.
3. Store idle power tools out of the reach of children and **DO NOT** allow persons unfamiliar with the power tool or these instructions to operate the power tool. Power tools are dangerous in the hands of untrained users.
4. Use the power tool, accessories etc. in accordance with these instructions, taking into account the working conditions and the work to be performed. Use of the power tool for operations different from those intended could result in a hazardous situation.

## **STAPLER/WELDER USE AND CARE**






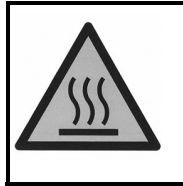

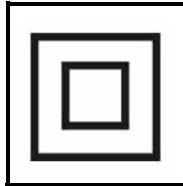
1. **ALWAYS** unplug the charging lead when not in use.
2. **ALWAYS** ensure this device is kept out of children's reach.
3. The staples used with this device are made of special materials, not ordinary steel wire. When the staples are used up, please contact your CLARKE dealer, otherwise any malfunction caused by the use of staples of other materials will not be covered by the warranty.
4. Wear gloves in operation to prevent burns and wear protective glasses to protect your eyes from flying staple ends if end cutting pliers are used
5. Wear protective glasses and dust mask during the any sanding operations when finishing off the repair.
6. The product is not suitable for pipeline products that require waterproof and sealing requirements for conveying liquids or gases.
7. Release the trigger immediately to stop heating once the heated staple turns red in the operation.

## **BATTERY TOOL USE AND CARE**

1. Recharge only with the charger supplied. A charger that is suitable for one type of battery pack may create a risk of fire when used with another.
2. Under abusive conditions, liquid could be lost from the battery; avoid contact. If contact accidentally occurs, flush with water. If liquid contacts eyes, additionally seek medical help. Liquid ejected from the battery may cause irritation or burns.

## SAFETY SYMBOLS

The following safety symbols may be found on this product packaging.

	Read instruction manual before use		WEEE Symbol (lithium ion batteries)
	Do not immerse battery in water. Harmful to aquatic life.		Do not Incinerate batteries
	Indoor use only		Hot surfaces
	Wear protective gloves		Class II product without earth connection (charger)

## ENVIRONMENTAL RECYCLING POLICY



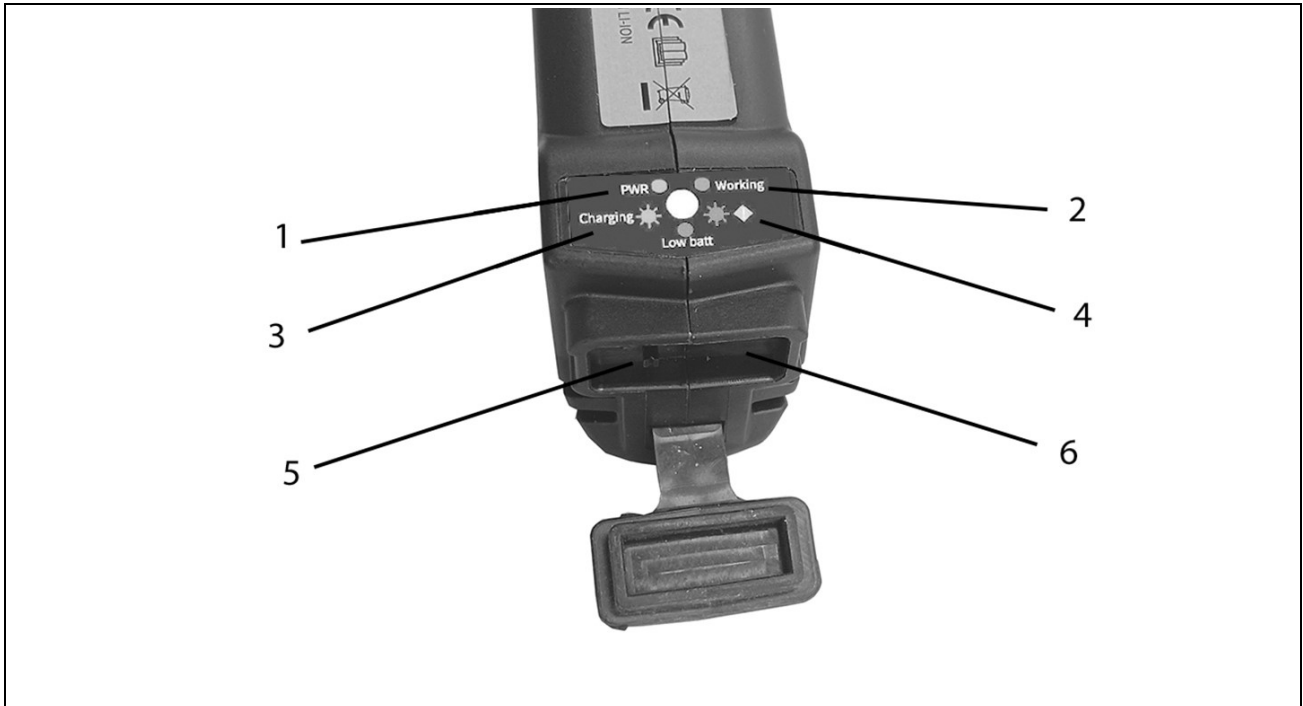
Do not dispose of this product with general household waste. All tools, accessories and packaging should be sorted, taken to a recycling centre and disposed of according to the laws governing Waste Electrical and Electronic Equipment.

Through purchase of this product, the customer is taking on the obligation to deal with the WEEE in accordance with the WEEE regulations in relation to the treatment, recycling & recovery and environmentally sound disposal of the WEEE.

In effect, this means that this product must not be disposed of with general household waste. It must be disposed of according to the laws governing Waste Electrical and Electronic Equipment (WEEE) at a recognised disposal facility.

The Lithium Ion battery falls under the Waste Batteries and Accumulators Regulations 2009 and should be disposed of in a controlled manner if necessary.

# CONTROLS & DISPLAY



1	Green light	Green light on - standby
2	Blue light	Blue light comes on - Normal operation
3	Large LED light	Green light flashing - unit is charging Green light continuously on - unit is on
4	Red light	Red light flashes quickly. Overheating protection -The device will recover automatically. Red light continuously on - low battery
5	On/Off switch	Turns the device on/off
6	Charging connection port	Standard USB style connection

---

## CHARGING USING THE MAINS ADAPTOR

---

Charge the battery before using it for the first time.

1. Insert the charger lead into the charging jack socket.
2. Connect the mains adaptor to the mains outlet.
  - The green LED will flash when the unit is charging.
  - CHARGING TIME- 3 hours



To ensure maximum life from the battery, recharge after every use if possible and thereafter, once every three months. Always avoid leaving the stapler battery in a state of discharge which would lead to reduced performance and to premature battery failure.

The stapler should not be operated while using the charger.

**NOTE:** If the battery requires replacement take the unit to your CLARKE dealer.



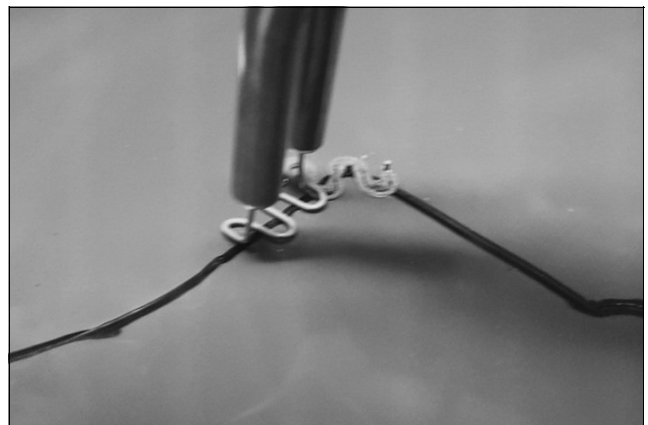
## OPERATION

1. Push fit the welding tip onto the heating elements.
2. Toggle the POWER switch to the ON position. The green LED status indicator will come on.
3. According to the shape of the damage to be repaired, select the corresponding staple from the selection on page 12 and insert into the welding tips of the device.
4. If the plastic to be repaired has a long crack which is likely to extend over time, drill a small hole at the end of the crack to prevent this happening before beginning the stapled repair.



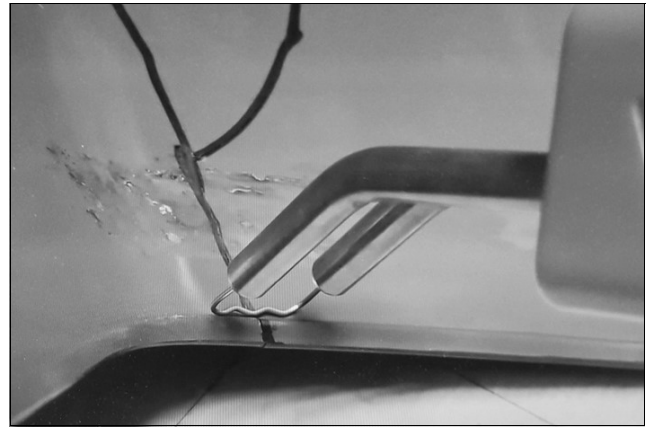
5. Press the red power switch to energise the heating elements
  - The blue LED lamp will come on.
6. Holding the device tightly, align the staple with the crack to be repaired.
  - The staple will be heated up and melt into the plastic within a few seconds.
7. Begin working at the beginning of any long crack or split and add more staples, progressing outward.

8. Position the device so that the transverse part of the staple sinks into the plastic to be repaired until completely covered.
  - Take care not to push the staple in too far, so as to risk breaking through the whole thickness of the plastic component.



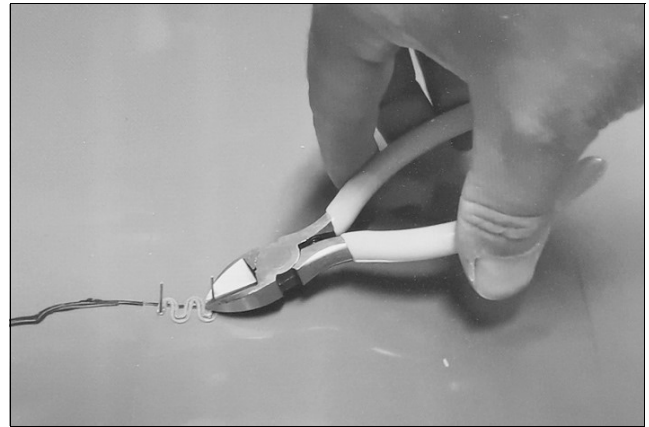
9. Give the device a very slight twist to help the staple become completely embedded under plastic to prevent any chance of it pulling out.

10. Use a straight staple when repairing along the edge of the workpiece.



11. Cut off the exposed part of the staple or rock it back and forth with your hands until it breaks off.

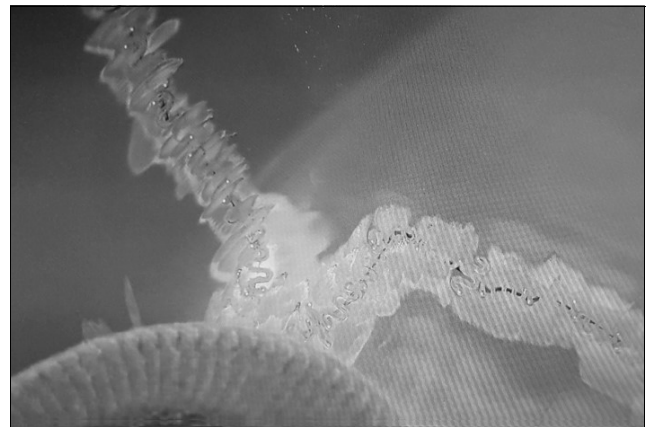
- A pair of end cutting pliers may be very useful for this. If using these, wear safety glasses to protect from flying staple ends.



12. Use the welding tip to heat the welds and any protruding plastic next to it wrapping and levelling with melted plastic to strengthen the connection.

**NOTE: the underside of the repair may become hot while working.**

13. Once the repair is completed, the staple ends and rough plastic can be cleaned off using a sanding disc or similar tool but taking care not to remove any significant material from the repaired plastic component.



## LED LAMP STATUS

- The green "working" LED will be on when the unit is fully charged. This can be considered a "standby" condition.
- During charging the green light will be flashing
- During Normal working the blue LED will be on.
- (A flashing red LED shows a fault such as overheating.
- A continuous red LED shows a low battery condition.









---

## **CARE AND MAINTENANCE**

---

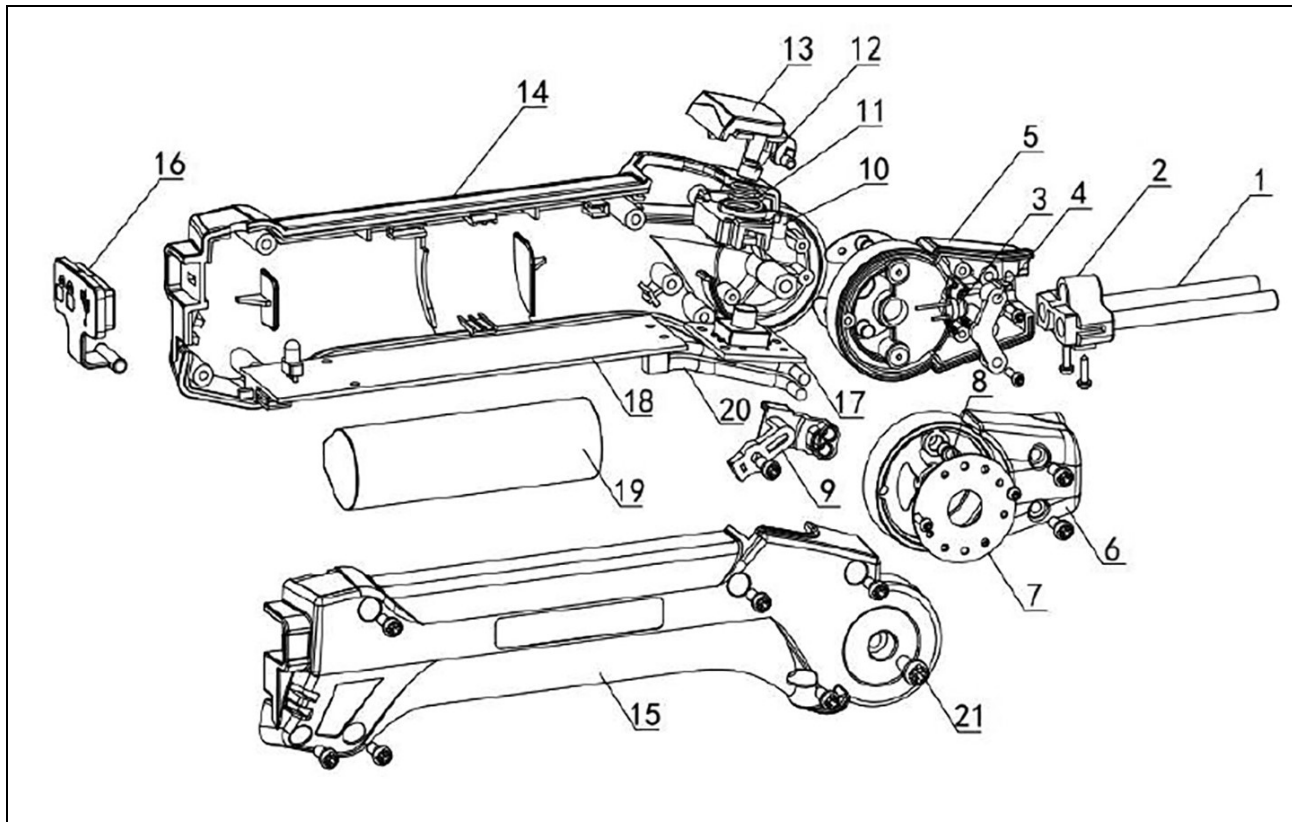
1. The device should be stored in a dry and cool place. When used outdoors, avoid prolonged exposure to the sun.
2. Avoid using solvents when cleaning plastic parts, (most plastics are susceptible to damage from the various types of commercial solvents).
3. In order to ensure good contact, keep the small holes for the staples clean.
4. Fully charge the battery every three months to maintain battery performance if keep it not used for a long time.
5. Check the charger power cable to ensure it is sound and free from cracks, bare wires etc.
6. Refer to your CLARKE dealer if any repairs are required.

## STANDARD ACCESSORIES SUPPLIED

No	Qty	Staple Type		
1	50	0.6 mm outside corner staples for repairing outside corners. Part No;-1800208		
2	50	0.8 mm inside corner staples for repairing inside corners. Part No;-1800209		
	50	0.8 mm flat staples for repairing flat plastic surfaces Part No;-1800212		
4	50	8 mm Wave staples for repairing flat plastic surfaces that need extra reinforcement Part No;-1800214		

Please re-order from your CLARKE dealer.

# COMPONENT PARTS



No	Description
1	Copper rods
2	Copper rod holder
3	LED light
4	Wire guide 1
5	Left head cover
6	Right head cover
7	Locator plate
8	Ball plunger
9	Wire guide 2
10	Switch bracket
11	Spring

No	Description
12	Switch actuator
13	Operating switch
14	Left housing
15	Right housing
16	Rubber charging port cover
17	Switchboard
18	Main PCB
19	Battery
20	Power cable
21	X-head screw

Consumable items listed on page 12 are available from your Clarke dealer.

# DECLARATION OF CONFORMITY-UK



Hemnall Street, Epping, Essex, CM16 4LG

## DECLARATION OF CONFORMITY

This is an important document and should be retained.

We hereby declare that this product(s) complies with the following legislation:

*The Batteries and Accumulators (Placing on the Market) Regulations 2008*

*The Electromagnetic Compatibility Regulations 2016*

*The Electrical Equipment (Safety) Regulations 2016*

*The Restriction of the Use of Certain Hazardous Substances in Electrical and Electronic Equipment Regulations 2012*

The following standards have been applied to the product(s):

*EN 61000-3-3:2013+A1:2019+A2:2021, EN IEC 55014-1:2021, EN 55032:2015+A11:2020+A1:2020, EN IEC 61000-3-2:2019+A1:2021, EN IEC 55015:2019+A11, IEC 62321-5:2013, IEC 62321-6:2015, EN IEC 62368-1:2020+A11:2020, IEC 62321-7-1:2015, IEC 62321-7-2:2017, EN IEC 55014-2:2021, IEC 62321-4:2013+AMD1:2017, EN 55035:2017+A11:2020, IEC 62321-8:2017, IEC 62321-3-1:2013, EN 61547:2009*

The technical documentation required to demonstrate that the product(s) meet(s) the requirement(s) of the aforementioned legislation has been compiled and is available for inspection by the relevant enforcement authorities.

The UKCA mark was first applied in: 2024

**Product Description:** Hot Stapler  
**Model Number(s):** PSW2  
**Serial/Batch Number:** Refer to product/packaging label  
**Date of Issue:** 24/06/2024

**Signed:**

J.A Clarke

Director

# DECLARATION OF CONFORMITY-CE



**Clarke**<sup>®</sup>  
**INTERNATIONAL**

Fitzwilliam Hall, Fitzwilliam Place, Dublin 2

## DECLARATION OF CONFORMITY

**This is an important document and should be retained.**

**We hereby declare that this product(s) complies with the following legislation:**

2023/1542	Battery Regulation
2014/30/EU	Electromagnetic Compatibility Directive
2014/35/EU	Low Voltage Directive
2011/65/EU	Restriction of Hazardous Substances (RoHS) Directive

**The following standards have been applied to the product(s):**

EN 61000-3-3:2013+A1:2019+A2:2021, EN IEC 55014-1:2021, EN 55032:2015+A11:2020+A1:2020,  
EN IEC 61000-3-2:2019+A1:2021, EN IEC 55015:2019+A11, IEC 62321-5:2013, IEC 62321-6:2015,  
EN IEC 62368-1:2020+A11:2020, IEC 62321-7-1:2015, IEC 62321-7-2:2017, EN IEC 55014-2:2021,  
IEC 62321-4:2013+AMD1:2017, EN 55035:2017+A11:2020, IEC 62321-8:2017, IEC 62321-3-1:2013,  
EN 61547:2009

The technical documentation required to demonstrate that the product(s) meet(s) the requirement(s) of the aforementioned legislation has been compiled and is available for inspection by the relevant enforcement authorities.

**The CE mark was first applied in: 2024**

**Product Description:** Hot Stapler  
**Model Number(s):** PSW2  
**Serial/Batch Number:** Refer to product/packaging label  
**Date of Issue:** 24/06/2024  
**Signed:**

J.A Clarke

Director

# A SELECTION FROM THE VAST RANGE OF

# Clarke®

## QUALITY PRODUCTS



**AIR COMPRESSORS**  
From DIY to industrial, Plus air tools, spray guns and accessories.

**GENERATORS**  
Prime duty or emergency standby for business, home and leisure.

**POWER WASHERS**  
Hot and cold, electric and engine driven - we have what you need

**WELDERS**  
Mig, Arc, Tig and Spot. From DIY to auto/industrial.

**METALWORKING**  
Drills, grinders and saws for DIY and professional use.

**WOODWORKING**  
Saws, sanders, lathes, mortisers and dust extraction.

**HYDRAULICS**  
Cranes, body repair kits, transmission jacks for all types of workshop use.

**WATER PUMPS**  
Submersible, electric and engine driven for DIY, agriculture and industry.

**POWERTOOLS**  
Angle grinders, cordless drill sets, saws and sanders.

**STARTERS/CHARGERS**  
All sizes for car and commercial use.



## PARTS & SERVICE: 0208 988 7400

**Parts Enquiries**  
[Parts@clarkeinternational.com](mailto:Parts@clarkeinternational.com)

**Servicing & Technical Enquiries**  
[Service@clarkeinternational.com](mailto:Service@clarkeinternational.com)

SALES: UK 01992 565333 or Export 00 44 (0)1992 565335

**Clarke** INTERNATIONAL Hemnall Street, Epping, Essex CM16 4LG  
[www.clarkeinternational.com](http://www.clarkeinternational.com)